



Alexandra Court, Moscow Road,  
W2

£5,000 Per Month

NAPIER WATT

T: 0207 935 0011  
E: [enquiries@napierwatt.co.uk](mailto:enquiries@napierwatt.co.uk)  
W: [napierwatt.co.uk](http://napierwatt.co.uk)

35 Berkeley Square, Mayfair, London, W1J 5BF









## Description

Elegant two-bedroom apartment with exclusive garden access, moments from Westbourne Grove. Set on the second floor (with lift) of the well-regarded Alexandra Court, this beautifully finished two-bedroom, lateral apartment offers stylish living in an unbeatable location, just moments from the cafes, boutiques and restaurants of Notting Hill and Westbourne Grove. The apartment comprises a modern open-plan living and kitchen area, spacious master bedroom with en-suite shower room, second double bedroom, and a family bathroom. Unique to this property, it is currently the only flat in the building with a key to Prince's Square Gardens, a large, securely gated private garden square with a children's playground, providing a rare and highly desirable outdoor space in the heart of the city. Available, part furnished.

2 Bedrooms : 2 Bathrooms : Lift : Porter : Underground Parking : Council Tax Westminster Band G : EPC Rating C

## Key Features

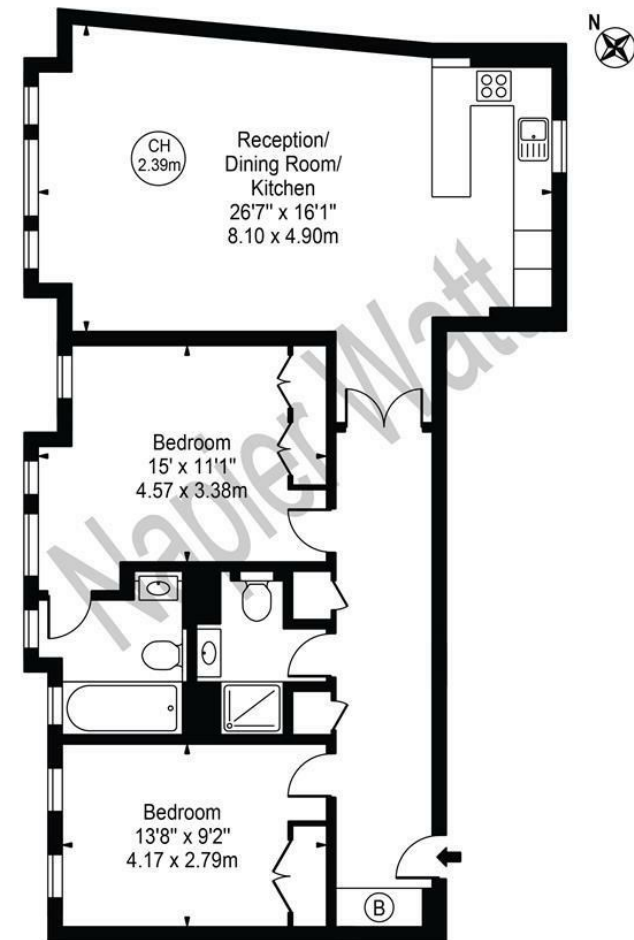
- BEAUTIFULLY PRESENTED
- PORTER
- LIFT
- ACCESS TO PRIVATE GARDEN SQUARE
- CLOSE TO HYDE PARK
- UNDERGROUND PARKING

## Terms

Fees & Charges: Tenancies exceeding £100,000 Per annum £480 inc VAT, Tenancies where a company is a tenant £480 Inc VAT.

## Alexandra Court

Approx. Gross Internal Area 1003 Sq Ft - 93.18 Sq M



**Second Floor**  
For Illustration Purposes Only - Not To Scale

This floor plan should be used as a general outline for guidance only and does not constitute in whole or in part an offer or contract. Any intending purchaser or lessee should satisfy themselves by inspection, searches, enquiries and full survey as to the correctness of each statement. Any areas, measurements or distances quoted are approximate and should not be used to value a property or be the basis of any sale or let.

IMPORTANT: We would inform prospective purchasers that these sales particulars have been prepared as a general guide only. A detailed survey has not been carried out, nor the services, appliances and fittings tested. Room sizes should not be relied upon for furnishing purposes and are approximate. If floor plans are included, they are for guidance only and illustration purposes only and may not be to scale. If there are any important matters likely to affect your decision to buy, please contact us before viewing the property.